



**LLOYDS**  
COMPOSITES

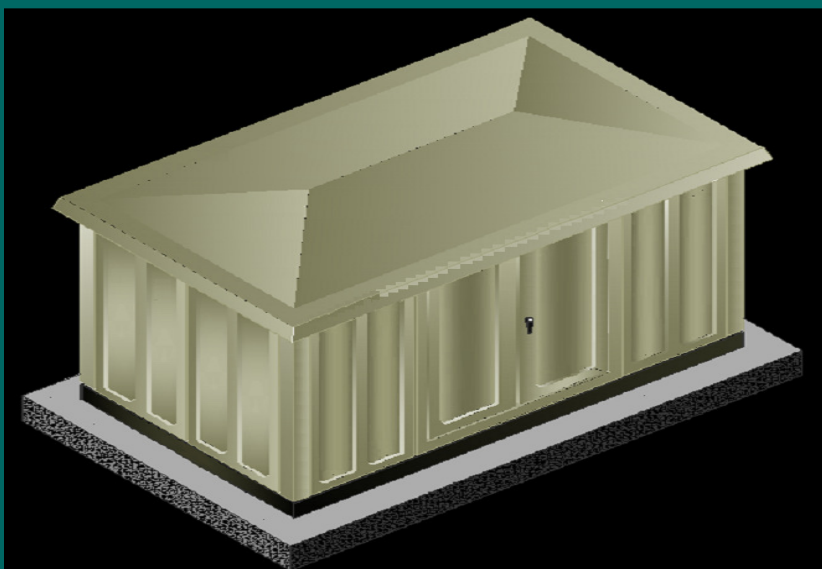
POLYESTER (FRP/GRP/FGRP) PRODUCTS

# Polyester Cubicles

- ❖ FOR OUTDOOR USE
- ❖ STRONG & DURABLE
- ❖ HIGH IMPACT RESISTANT
- ❖ ALL WEATHER RESISTANT
- ❖ DUST & WATER PROTECTED
- ❖ SELF-EXTINGUISHING
- ❖ NON CONDUCTIVE



CUBICLE FOR STORM WATER PUMP & PANEL



LV PANEL CUBICLE

Protection up to IP-55

# Salient Features

Our Polyester (FRP/GRP) Cubicles/Kiosks are basically designed for outdoor use. The construction is modular and hence can be assembled and dismantled with ease. Generally these are pre-assembled in the factory and installed at site by lowering or dropping over the panel/equipment to be housed and anchored on concrete or steel base. The Cubicles/Kiosks are resistant to all weather conditions and can withstand high impact and aggressive environmental conditions.

## Utility

Ideal for housing and protection of;

- Sub-station Transformers
- Low/High Voltage Electrical Panels
- Storm water pumps and Control Panels
- Capacitor Banks
- Generators
- Fire Pumps and panels

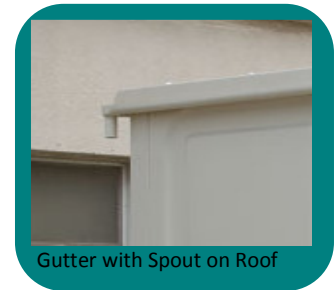
## Advantages

- Higher strength to weight ratio
- Easy to install
- Non-conducting by nature
- Fire retardant and self-extinguishing
- Resistant to corrosive and chemical environments
- Virtually maintenance free (occasional cleaning recommended).
- Can be worked on /machined easily

## Options

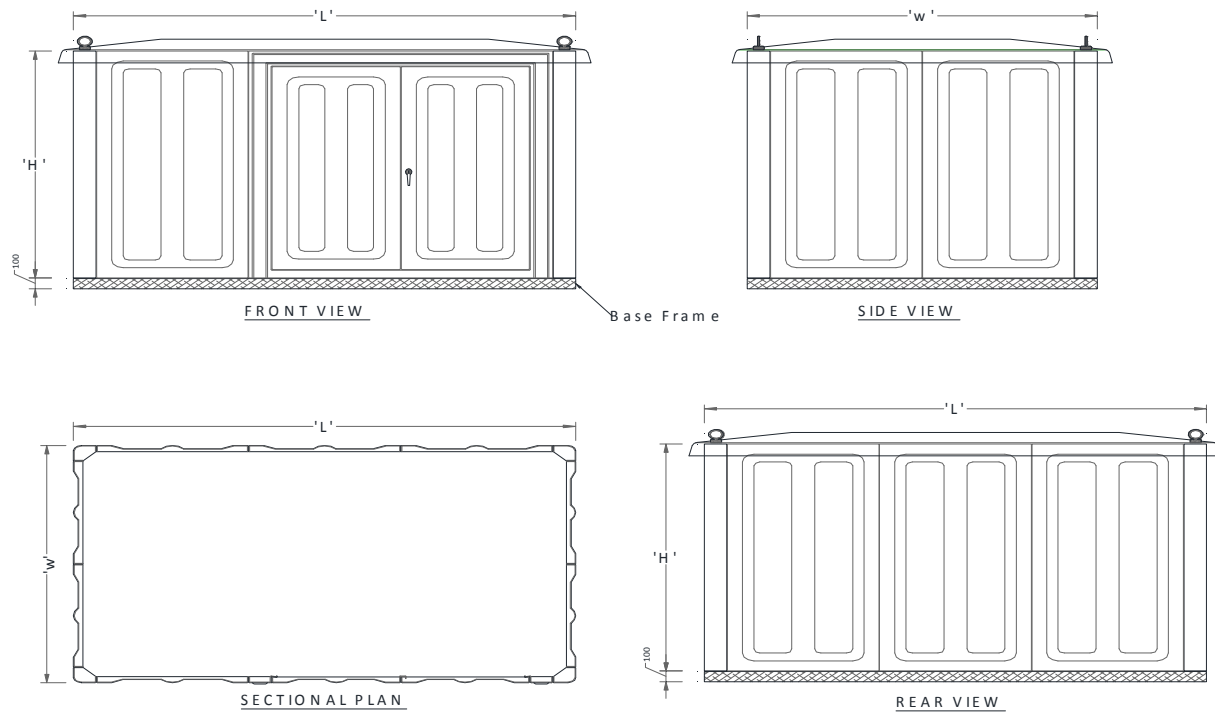
Customer specified cubicles/Kiosks can also be manufactured to meet specific requirements (**subject to conditions**) with regard to following and more;

- External colour-finish
- Dimensions and design
- Fire rating
- IP-Rating (Ingress Protection from solids & liquids IP-55 max.)
- Provisions for mounting air conditioner/ small equipment
- Mounting pads for Beacon lights, heat detector, anti-condenser
- P.U. foam insulated roof, walls and doors
- Water & Boil proof [WBP] plywood encapsulated walls & roof
- Access windows & View windows
- Shutter location- on any side or multiple sides
- Internal Partitions(vertical only)
- P.U. foam insulated roof, walls and doors
- Ventilation requirements: louvered or forced vents



Cubicle with Double Shutter in Front: Size 6000 L x 4000 W x 2500 H

## GENERAL ELEVATIONS



### Standard Specifications;

- Externally protected with UV resistant gel-coat in RAL 7032 colour.
- Self-extinguishing to BS 476:part 7: 1997 class2
- IP- Rating : 55 (for double shutters)
- Stainless steel Hinges & Hardware
- Stainless steel accessories [Door stays, Door Retainers, Lifting Hooks, etc.]
- Powder coated heavy duty handle lock 3-point locking system for doors
- EPDM rubber gaskets & foam gaskets
- GI/ Painted MS base frame
- Fluorescent Lamp with Door switch
- Floor mountable (Cubicle is open bottom type)

### Standard Ranges; [Dimensions in millimetres]

EXTERNAL DIMENSIONS			Base Frame Ht.	Item Code
Length 'L'	Width 'W'	Height 'H'		
1500	1000	2000	100	CU-1510/20
2000	1000	2000	100	CU-2010/20
2500	1000	2000	100	CU-2510/20
1500	1000	2500	100	CU-1510/25
2000	1000	2500	100	CU-2010/25
2500	1500	2500	100	CU-2515/25
3000	2000	2500	100	CU-3020/25
4000	2000	2500	100	CU-4020/25
4500	2500	2500	100	CU-4525/25
5000	3000	2500	150	CU-5030/25
6000	4000	2500	150	CU-6040/25
5000	2500	3000	150	CU-5025/30
5500	4500	3000	150	CU-5545/30

*Other composite products:*

**Polyester Cabinets/Enclosures for;**

- Electrical & electronic equipment
- Switchgears
- Feeder pillars
- Energy meters
- Capacitor banks
- Water meters

**Polyester Roofing Accessories;**

- Skylights Panels: Single, Double & Triple Layered
- Roof Curbs: Insulated & Non-Insulated
- Down Spouts: For round & square down pipes
- Rain Gutter: For Valley & Eave side
- Flashings: For ridges & edges
- Domes: Insulated & Non-Insulated

**Polyester Shades & Hoods;**

- Instrument shades & Enclosures
- Telephone Hoods & Booths
- Card Reader Hoods



Tel: +971 4 333 5950; Fax: +971 4 333 5960  
P.O. Box No. 48491, Dubai, U.A.E.  
E-mail: [lloydsci@eim.ae](mailto:lloydsci@eim.ae)  
Web: [www.lloydscomposites.com](http://www.lloydscomposites.com)